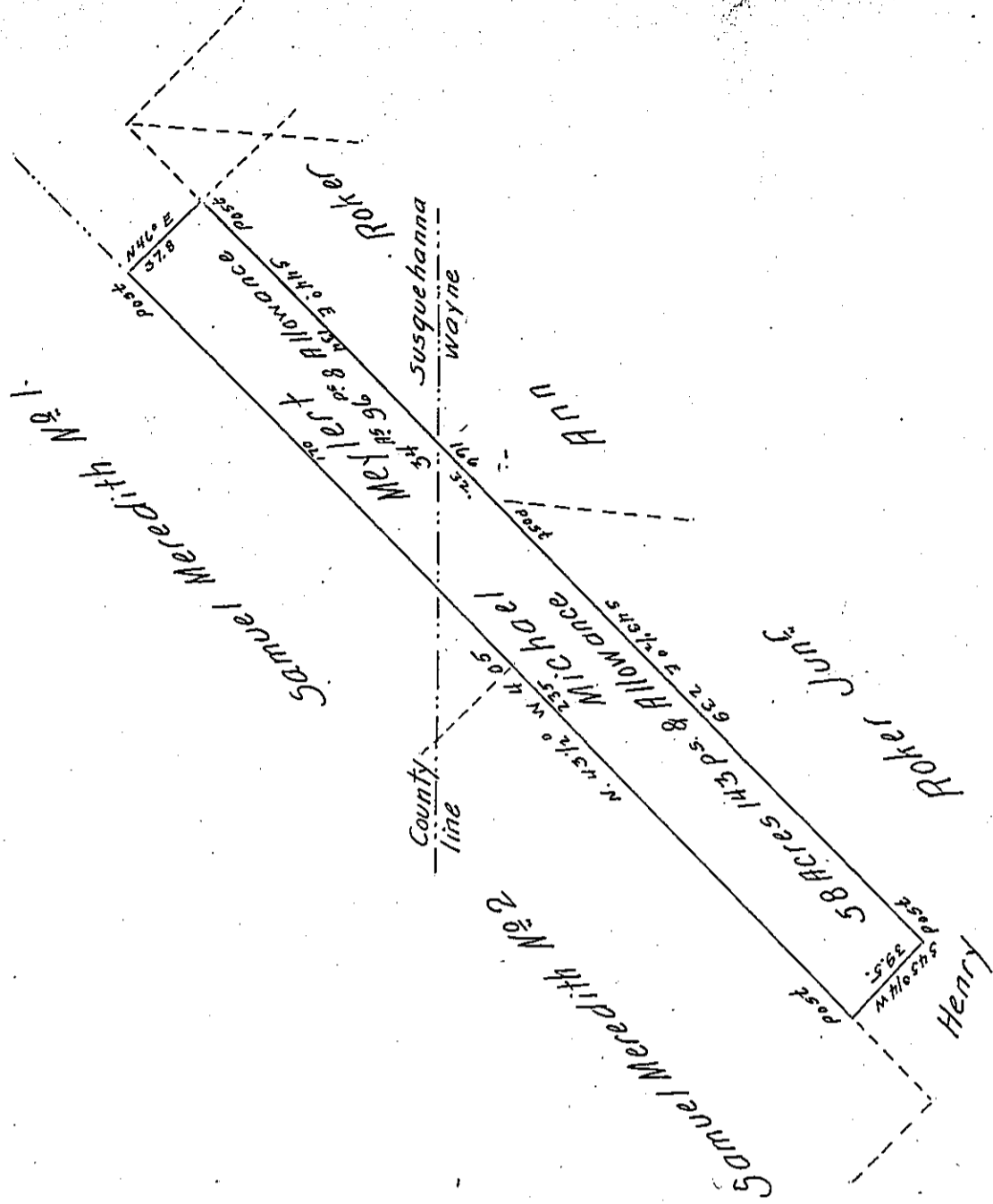


FORM No. 1.



A Draught of a tract of land Situate in the townships of Clifford in the County of Susquehanna and in the township of Mount pleasant in the County of Wayne adjoining lands late of Henry Roker Junr and Ann Roker on the North and East and Samuel Meredith No. 1 & 2 on the South and West. Surveyed the twenty ninth day of October A. D. 1856 for Michael Meylert in pursuance of his Warrant bearing date the eighth day of September A. D. 1856. Containing in Wayne County fifty eight acres and one hundred and forty three perches and in Susquehanna County Thirty four Acres and ninety six perches Making in both Counties Ninety three Acres and Seventy nine perches with the allowance of Six per cent for roads &c.

Timothy Boyle Surveyor
for Susquehanna County

To J. Porter Brawley Esqr.
Surveyor General

H. L. Stephens
Surveyor for Wayne Co^{ty}

IN TESTIMONY that the above is a copy of the original remaining on file in the Department of Internal Affairs of Pennsylvania, made conformably to an Act of Assembly approved the 16th day of February, 1833, I have hereunto set my Hand and caused the Seal of said Department to be affixed at Harrisburg, this twentieth day of March 1906.

Isaac D. Brown
Secretary of Internal Affairs.